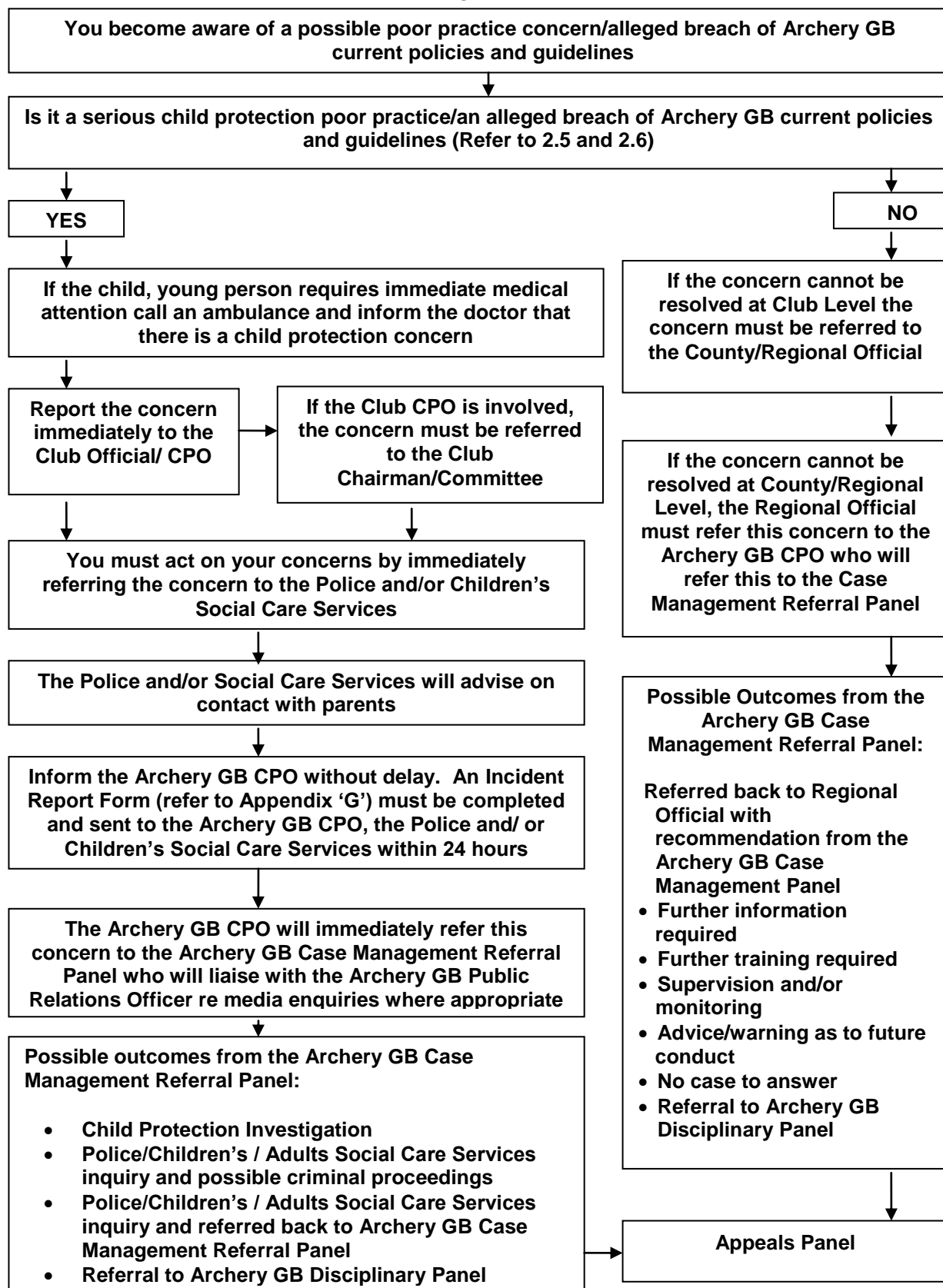


FLOW DIAGRAM 2

A QUICK GUIDE TO PROCEDURES IF YOU HAVE CONCERNS ABOUT A POSSIBLE POOR PRACTICE SITUATION/ALLEGED BREACH OF CURRENT POLICIES AND GUIDELINES WITHIN THE ARCHERY GB ENVIRONMENT



**CONFIDENTIALITY MUST BE MAINTAINED UNTIL THE OUTCOME OF THE
INVESTIGATION IS RELEASED
DO NOT DELAY IN REPORTING YOUR CONCERN**